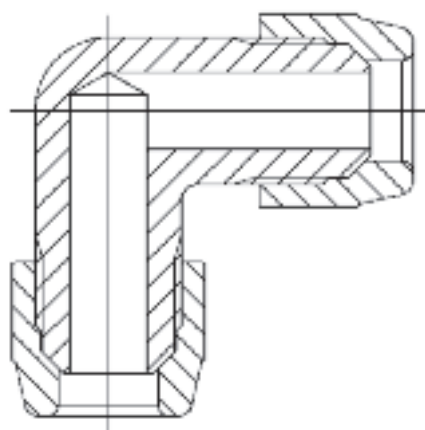


1600

Linea - Line

raccorderia per impianti di condizionamento
fittings for air-conditioning systems





SEZIONE / SECTION

RACCORDI/FITTINGS

FUNZIONAMENTO / OPERATION

Questi raccordi sono impiegati negli impianti di condizionamento.

These fittings are used in air conditioning systems

MATERIALI/MATERIALS

CORPO RACCORDO: Ottone UNI EN 12165-CW617N

DADO: Ottone UNI EN 12165-CW617N

BODY: Brass UNI EN 12165-CW617N

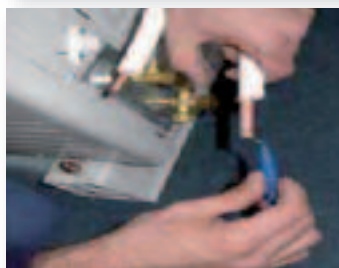
NUT: Brass UNI EN 12165-CW617N

ISTRUZIONI DI MONTAGGIO ASSEMBLY INSTRUCTIONS



1° -Taglio tubo per preparazione "cartellatura"

1° - Cut the pipe to prepare flare procedure



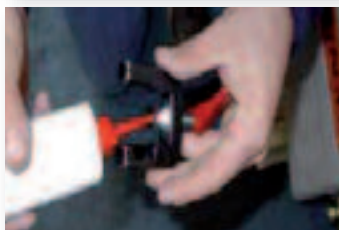
2° -Pulitura tubo con "sbavatore"

2° - Clean the pipe with the reamer



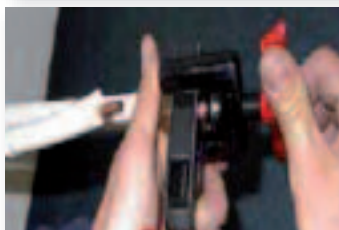
3° -Inserire il dado nel tubo e procedere con l'operazione di "cartellatura" con l'apposito utensile

3° -Insert the nut in the pipe and proceed with flare operation by means of the appropriate tool



4° -Oliatura del "cartellatore"

4° - Oil the flaring tool



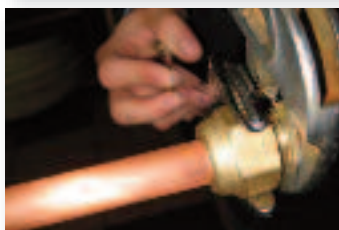
5° -Cartellatura

5° - Flare



6° -Il tubo dopo l'operazione di "cartellatura"

6° - This is how the pipe looks like after flare operation



7° -Avvitare il dado

7° - Tighten the nut

Art. 1600.00

Niplo doppio - Double nipple



Codice/Code	Misura/Size	Quant./Q.ty	Euro
160000H060600H	1/4" x 6	200	1,93
160000H101000H	3/8" x 10	100	3,07
160000H121200H	1/2" x 12	50	4,21
160000H161600H	5/8" x 16	50	5,35

Art. 1600.20

Angolo doppio - Double elbow



Codice/Code	Misura/Size	Quant./Q.ty	Euro
160020H060600A	1/4" x 1/4"		2,65
160020H101000A	3/8" x 3/8"		3,81
160020H121200A	1/2" x 1/2"		5,74
160020H161600A	5/8" x 5/8"		7,78

Art. 1600.03

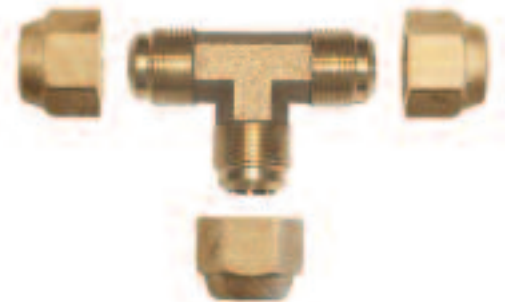
Niplo ridotto - Reduced nipple



Codice/Code	Misura/Size	Quant./Q.ty	Euro
160003H100600H	3/8" x 1/4"		2,41
160003H120600H	1/2" x 1/4"		3,50
160003H121000H	1/2" x 3/8"		3,88
160003H160600H	5/8" x 1/4"		4,24
160003H161000H	5/8" x 3/8"		4,62
160003H161200H	5/8" x 1/2"		5,05

Art. 1600.10

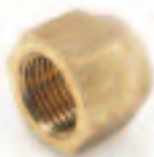
Tee



Codice/Code	Misura/Size	Quant./Q.ty	Euro
160010H060606A	1/4" x 1/4" x 1/4"		3,61
160010H101010A	3/8" x 3/8" x 3/8"		5,39
160010H121212A	1/2" x 1/2" x 1/2"		7,96
160010H161616A	5/8" x 5/8" x 5/8"		10,91

Art. 1600.70

Dado - Nut



Codice/Code	Misura/Size	Quant./Q.ty	Euro
160070H060000H	7/16 - 20 UNF x 06 - 1/4"		0,61
160070H100000H	5/8 - 18 UNF x 10 - 3/8"		0,89
160070H120000H	3/4 - 16 UNF x 12 - 1/2"		1,18
160070H160000H	7/8 - 14 UNF x 16 - 5/8"		1,40